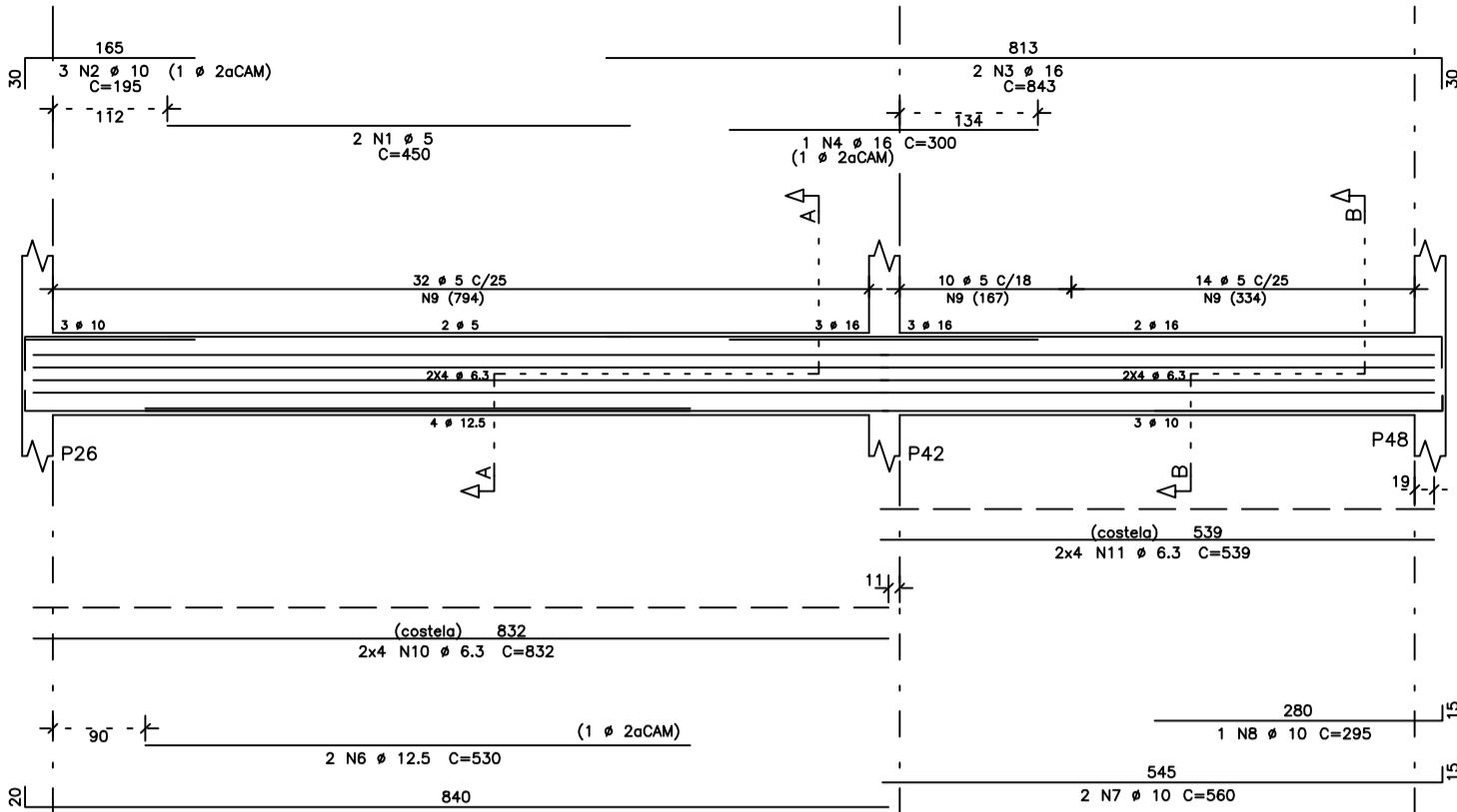
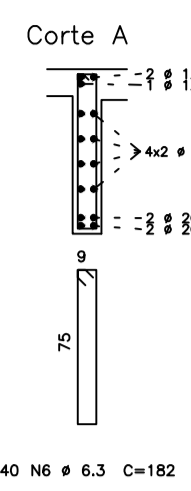
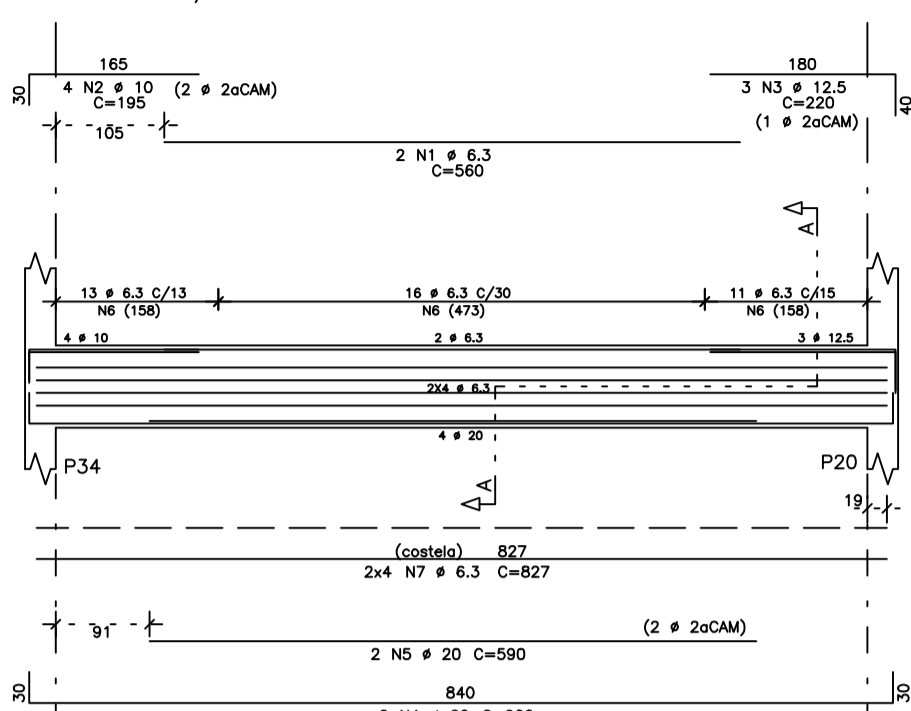


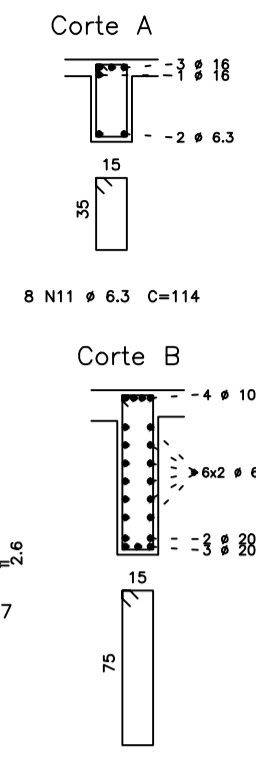
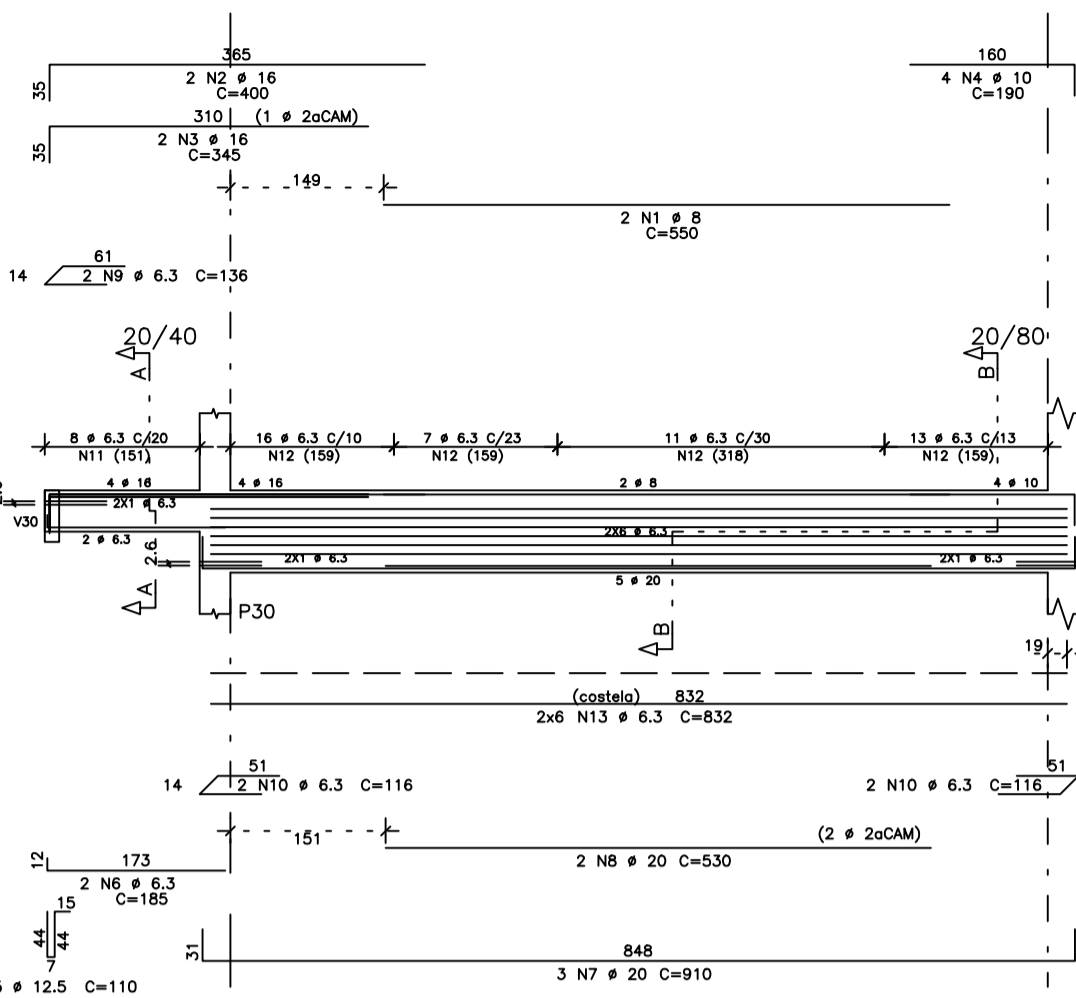
V10 14/80



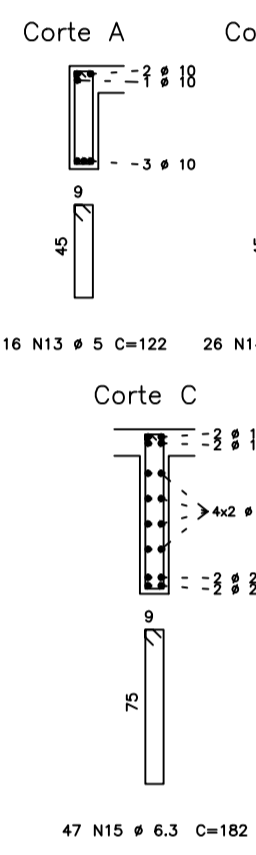
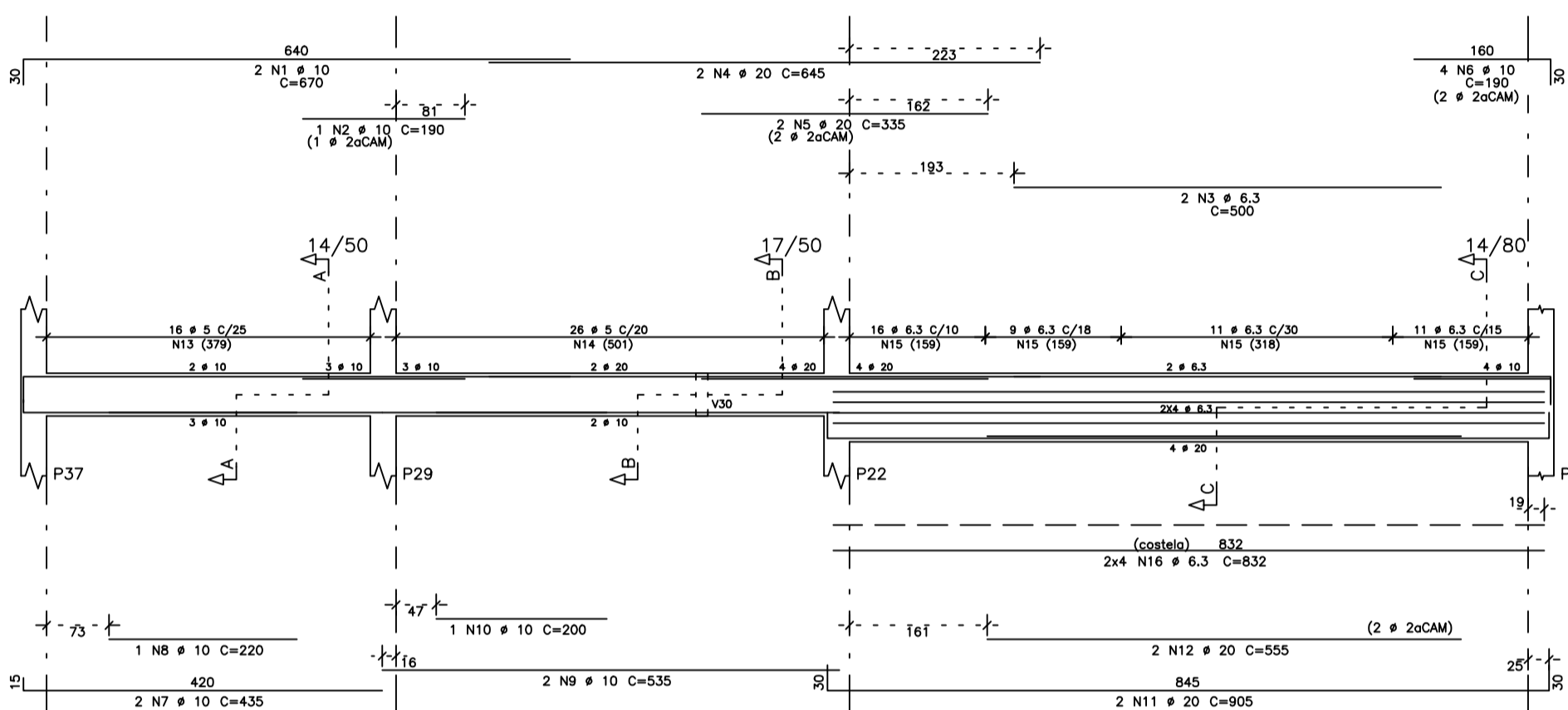
V12 14/80



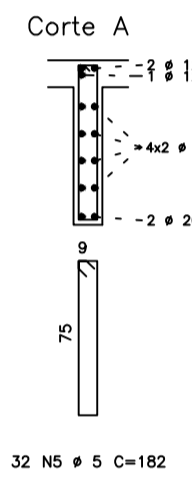
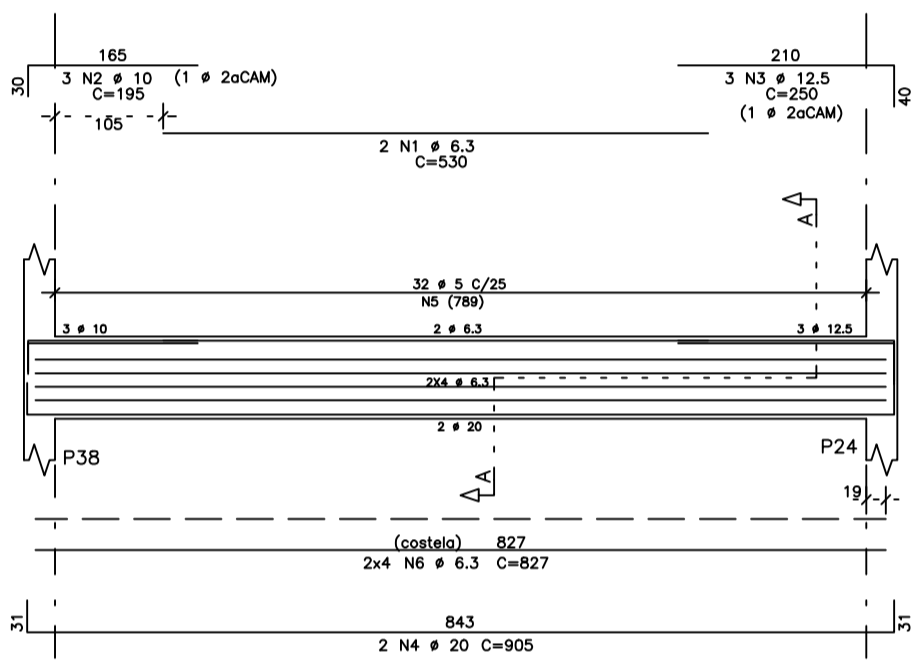
V13



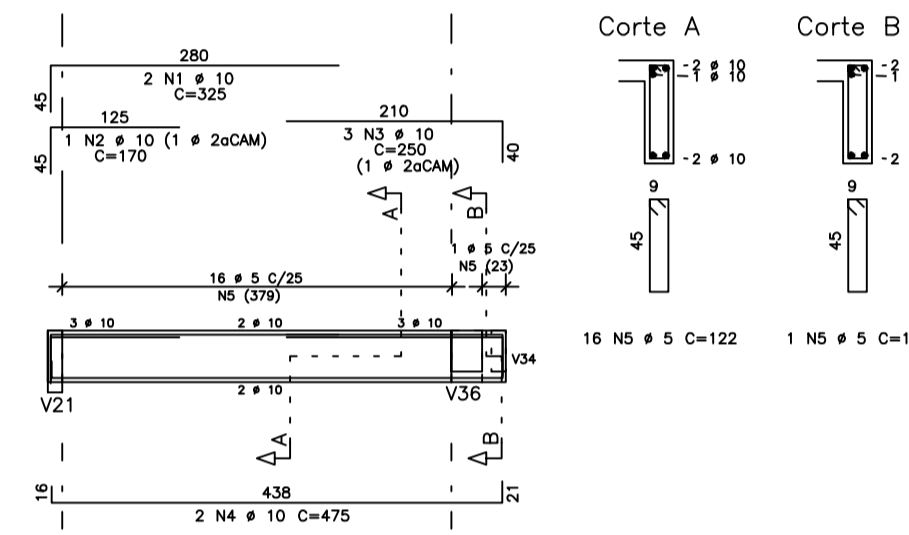
V14



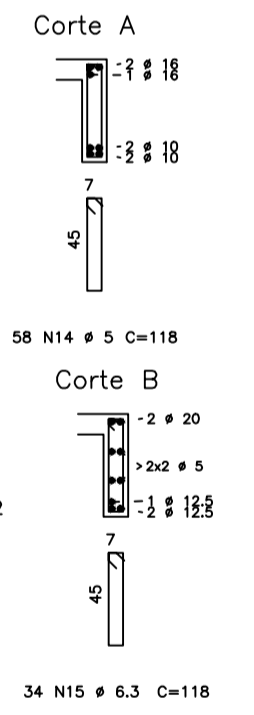
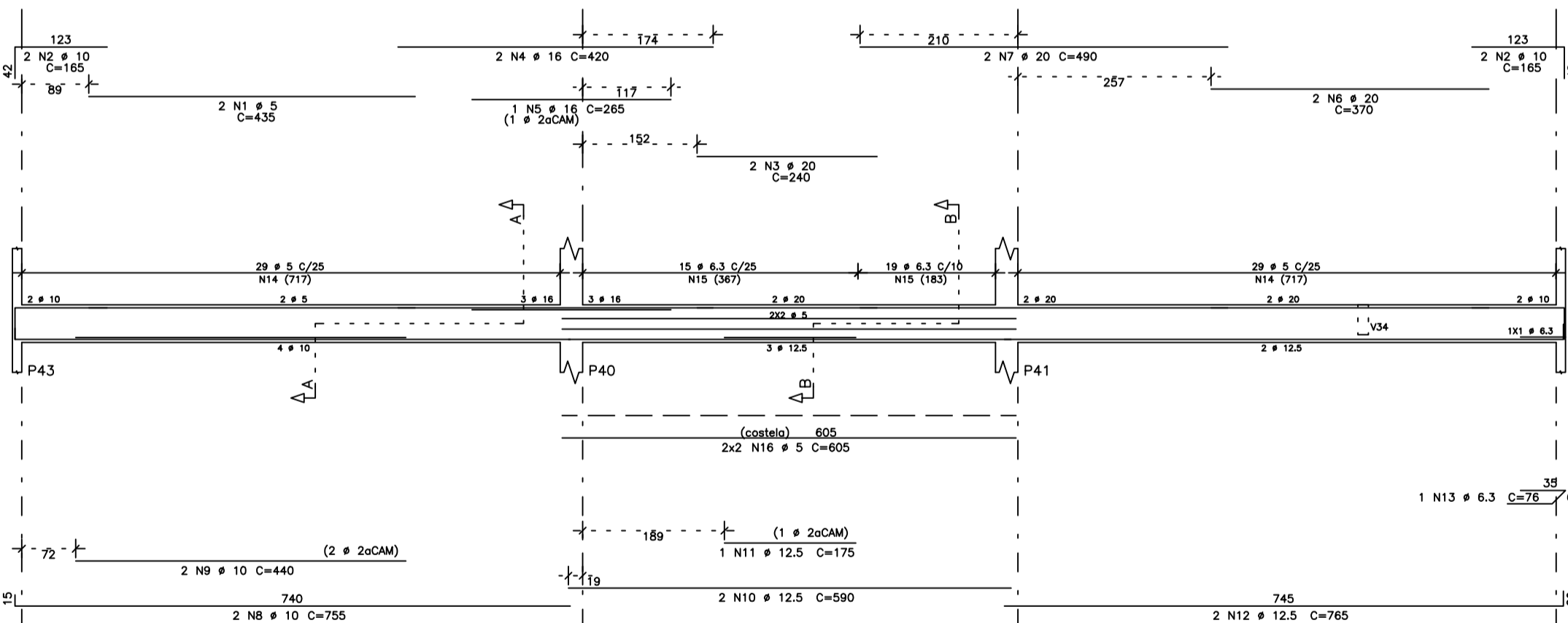
V15 14/80



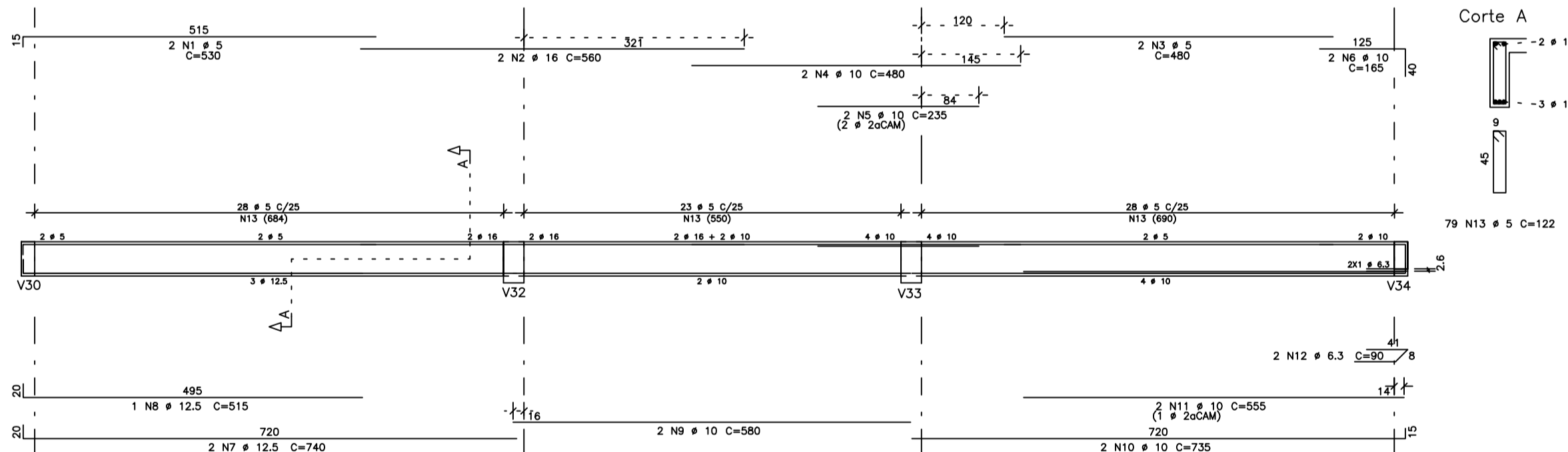
V20 14/50



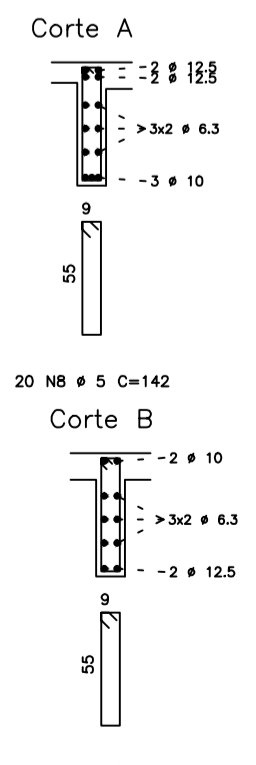
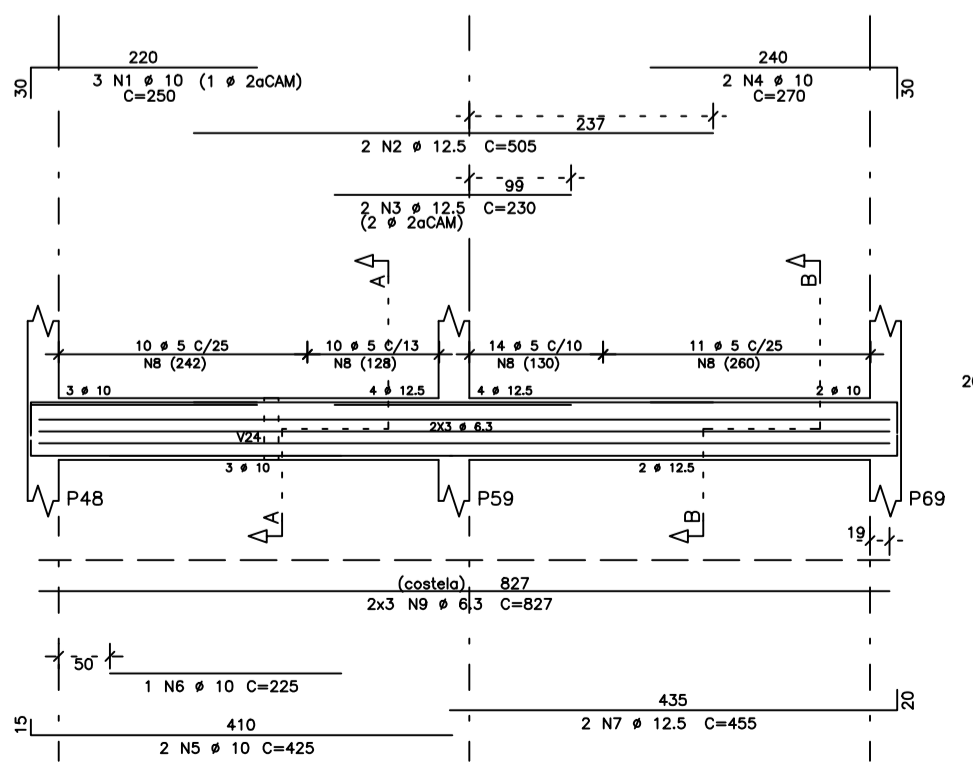
V17 12/50



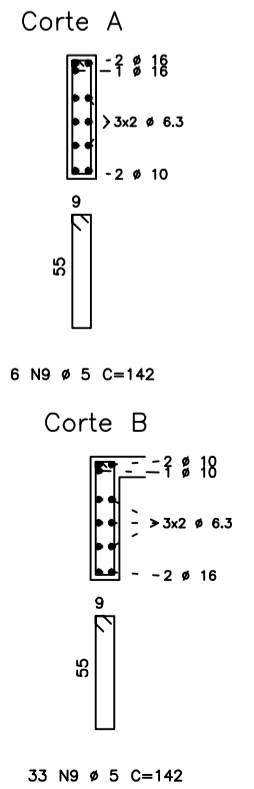
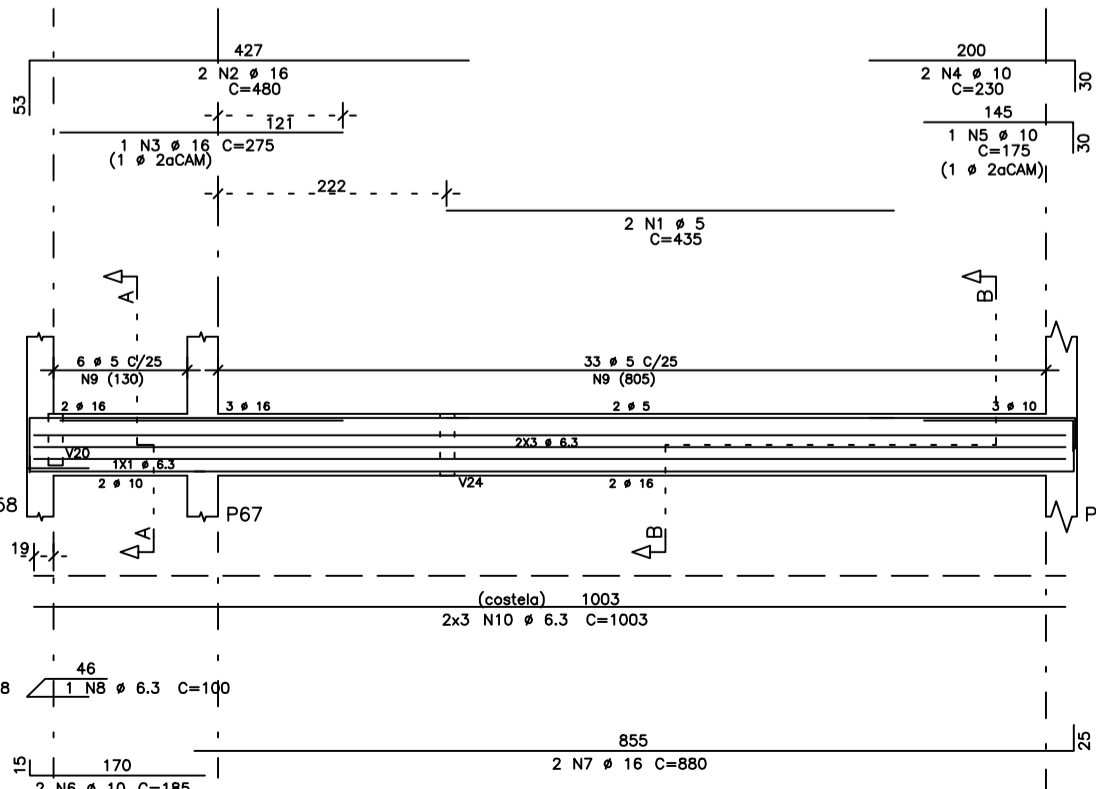
V18 14/50



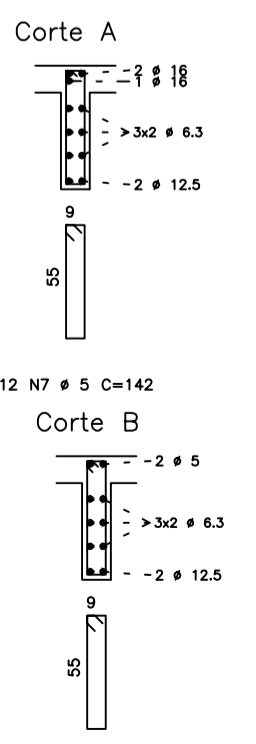
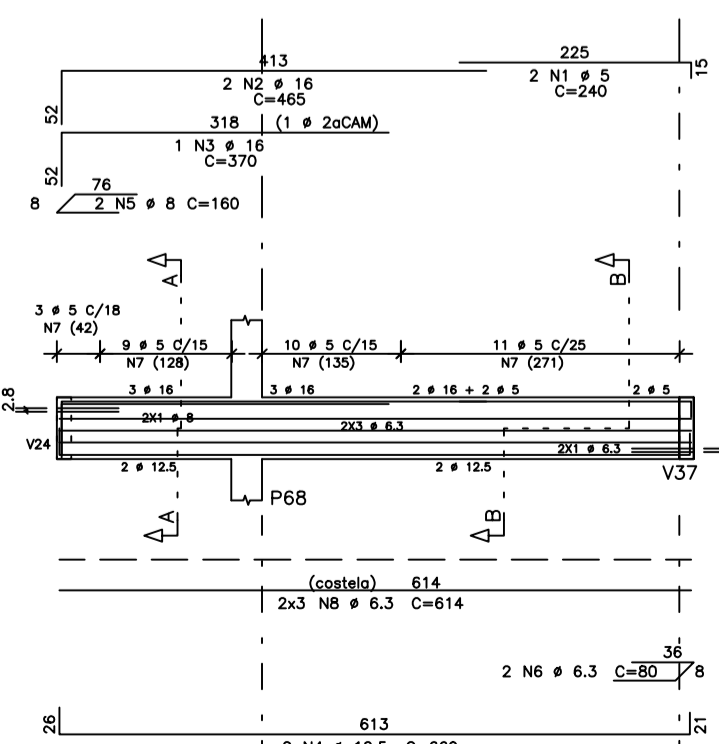
V19 14/60



V21 14/60



V23 14/60



ACO	POS	BIT	QUANT	COMPRIMENTO (em)	TOTAL (em)
V10					
608	1	5	2	450	900
50A	2	10	2	195	390
50A	3	16	2	843	1686
50A	4	16	2	300	600
50A	5	12.5	2	860	1720
50A	6	12.5	2	530	1060
50A	7	10	2	560	1120
50A	8	10	2	295	590
608	9	5	58	182	10518
50A	10	6.3	8	832	6656
50A	11	6.3	12	877	6984
V12					
50A	1	6.3	2	560	1120
50A	2	10	4	195	780
50A	3	16	2	220	880
50A	4	20	2	900	1800
50A	5	20	2	590	1180
50A	6	6.3	8	182	728
50A	7	6.3	8	877	6616
V13					
50A	1	8	2	550	1100
50A	2	10	2	240	480
50A	3	16	2	345	690
50A	4	10	2	190	380
50A	5	12.5	2	110	220
50A	6	6.3	3	165	330
50A	7	20	3	910	2730
50A	8	20	3	530	1590
50A	9	6.3	4	136	544
50A	10	6.3	4	114	456
50A	11	6.3	4	114	456
50A	12	6.3	4	114	456
50A	13	6.3	4	114	456
50A	14	6.3	4	114	456
50A	15	6.3	4	114	456
50A	16	6.3	4	114	456
V14					
50A	1	10	2	870	1740
50A	2	10	1	190	380
50A	3	6.3	2	240	480
50A	4	20	2	645	1290
50A	5	20	2	335	670
50A	6	10	4	190	760
50A	7	10	1	200	400
50A	8	10	2	435	870
50A	9	10	1	220	440
50A	10	10	2	535	1070
50A	11	10	1	200	400
50A	12	10	1	905	1810
50A	13	10	1	285	570
50A	14	10	1	128	256
50A	15	6.3	4	182	728
50A	16	6.3	4	182	728
V15					
50A	1	6.3	2	330	660
50A	2	10	3	195	585
50A	3	12.5	2	250	500
50A	4	20	2	905	1810
608	5	5	32	182	5824
50A	6	6.3	8	877	6984
V17					
608	1	5	2	435	870
50A	2	10	4	165	660
50A	3	20	2	240	480
50A	4	16	2	420	840
50A	5	16	2	265	530
50A	6	20	2	370	740
50A	7	20	2	495	990
50A	8	10	2	750	1500
50A	9	10	2	440	880
50A	10	12.5	2	560	1120
50A	11	12.5	2	175	350
50A	12	12.5	2	765	1530
50A	13	6.3	3	76	228
50A	14	6.3	3	118	354
50A	15	6.3	3	118	354
V18					
608	1	5	2	330	660
50A	2	16	2	860	1720
50A	3	10	3	240	720
50A	4	10	2	480	960
50A	5	10	2	235	470
50A	6	10	2	160	320
50A	7	12.5	2	740	1480
50A	8	12.5	2	515	1030
50A	9	10	2	580	1160
50A	10	10	2	1470	2940
50A	11	10	2	555	1110
50A	12	6.3	2	90	180
50A	13	5	79	122	9838
V19					
50A	1	10	3	250	750
50A	2	12.5	2	500	1000
50A	3	10	3	250	750
50A	4	10	2	270	540
50A	5	10	2	425	850
50A	6	10	1	225	225
50A	7	12.5	2	455	910
608	8	5	45	142	6390
50A	9	6.3	6	877	4956
V20					
50A	1	10	2	325	650
50A	2	10	1	170	340
50A	3	10	3	250	750
50A	4	10	2	475	950
50A	5	5	17	122	2074
V21					
608	1	5	2	435	870
50A	2	16	2	860	1720
50A	3	16	1	275	275
50A	4	10	2	230	460
50A	5	10	1	175	175
50A	6	10	2	185	370
50A	7	16	2	880	1760
50A	8	6.3	1	100	100
608	9	5	39	142	5538
50A	10	6.3	6	1003	6018
V23					
608	1	5	2	240	480
50A	2	16	2	460	920
50A	3	16	1	370	370
50A	4	12.5	2	660	1320
50A	5	8	2	160	320
50A	6	6.3	2	80	160
608	7	5	33	142	4686
50A	8	6.3	6	614	3884

ACO	RESUMO	ACO 50-60	COMPR	PESO
	(mm)		(m)	(kg)
608	640		124	102
50A	6.3		902	225
50A	4		14	14
50A	10		232	146
50A	12.5		130	130
50A	16		100	160
50A	20		157	392
Peso Total 608 =			102	102
Peso Total 50A =			1059	1059

02 MAR/16 ARTHUR VINICIUS
01 SET/13 REORG. ORDEM PRANCHAS

REVISÃO Nº DATA NOME ASSINATURA

ANTONIO DE PROJETOS E ART
DRA

PROFESSOR RESPONSÁVEL PELO PROJETO E ART
RESPONSÁVEL PELA EXECUÇÃO E ART

BRASIL AMAZONAS IFAM

PROFESSOR ANTONIO VENANCIO CASTELO BRANCO
PROJETO DE ESTRUTURA DE CONCRETO ESTATICA INDICADA
CONTEUDO: Armadura Vigas V10 / V12 / V13 / V14 / V15 / V17 / V18 / V19 / V20 / V21 / V23

CAMPUS HUMAITÁ BR 230, KM 05
HUMAITÁ AM
ESTADUAL EST 04/21