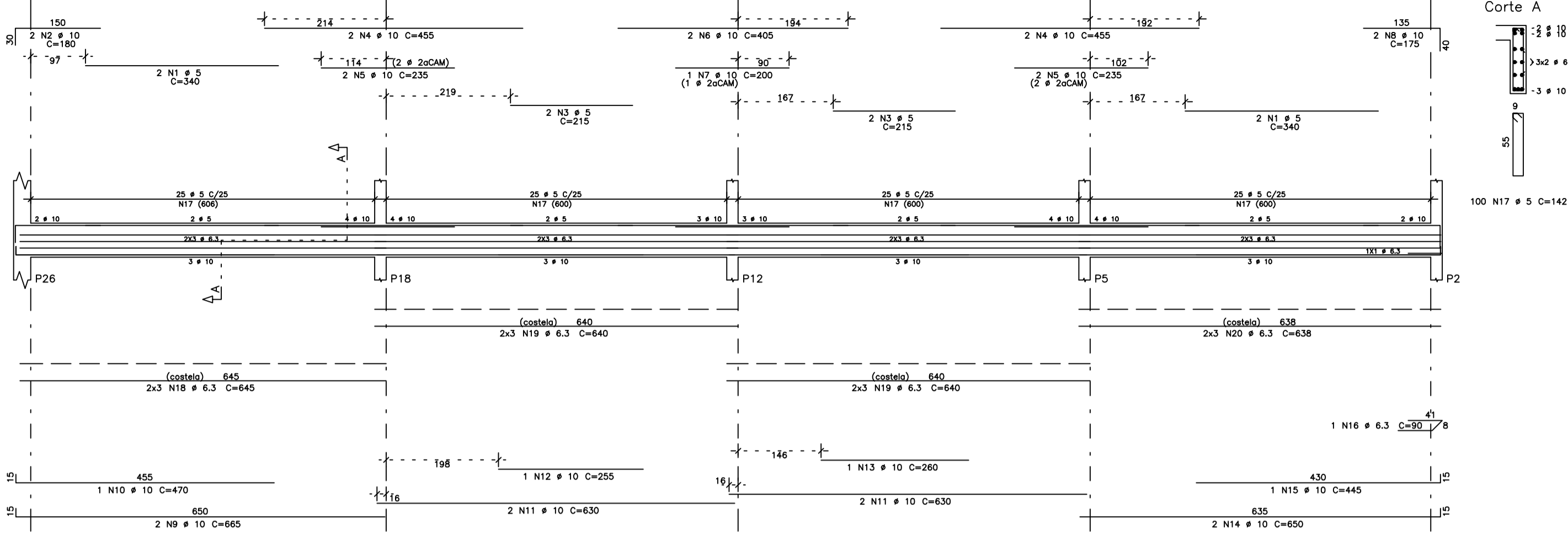
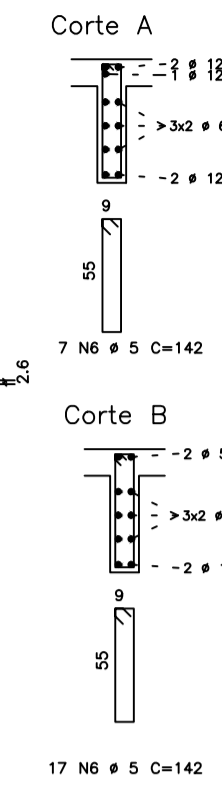
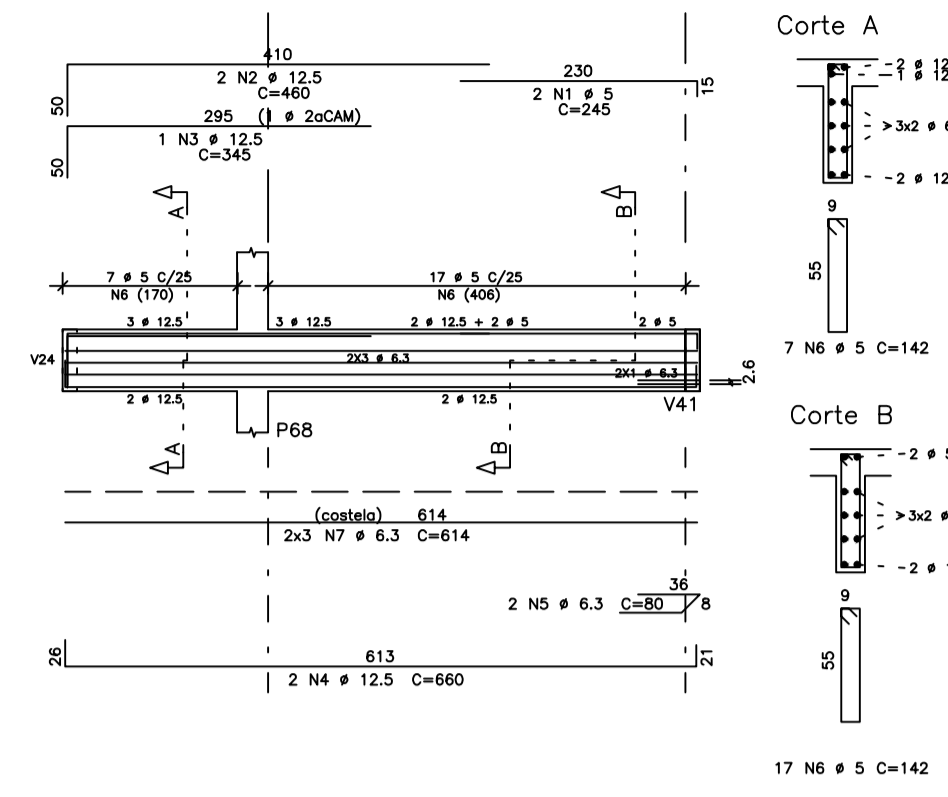


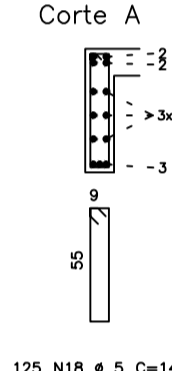
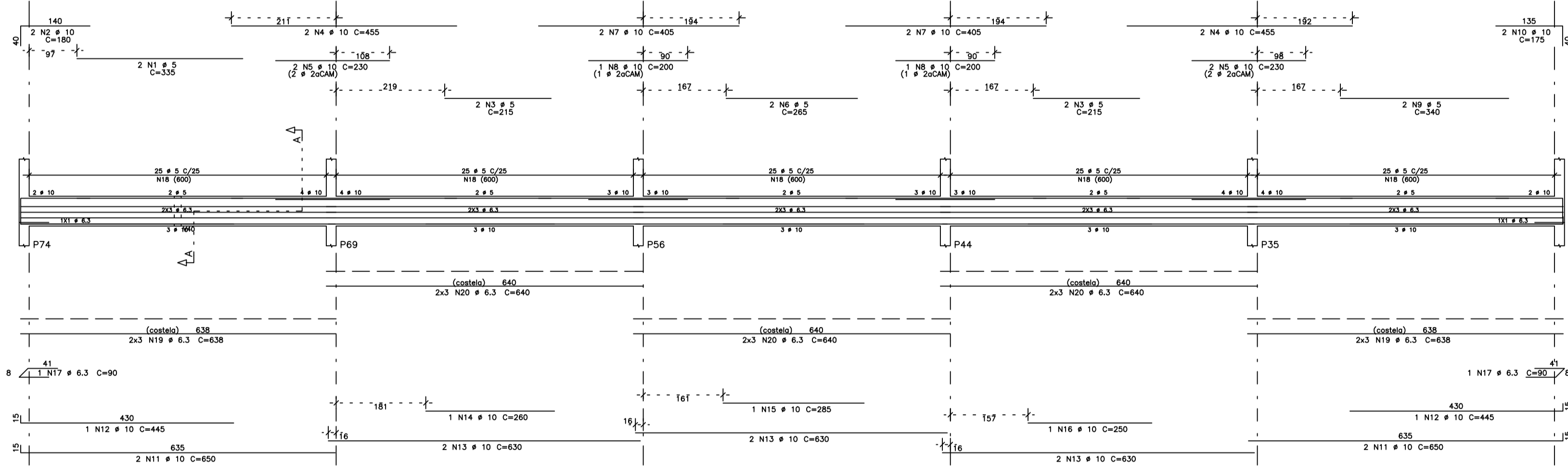
V38 14/60



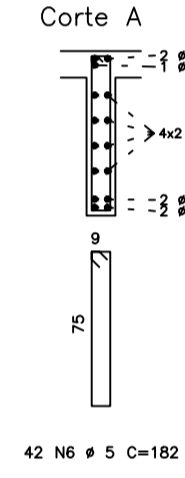
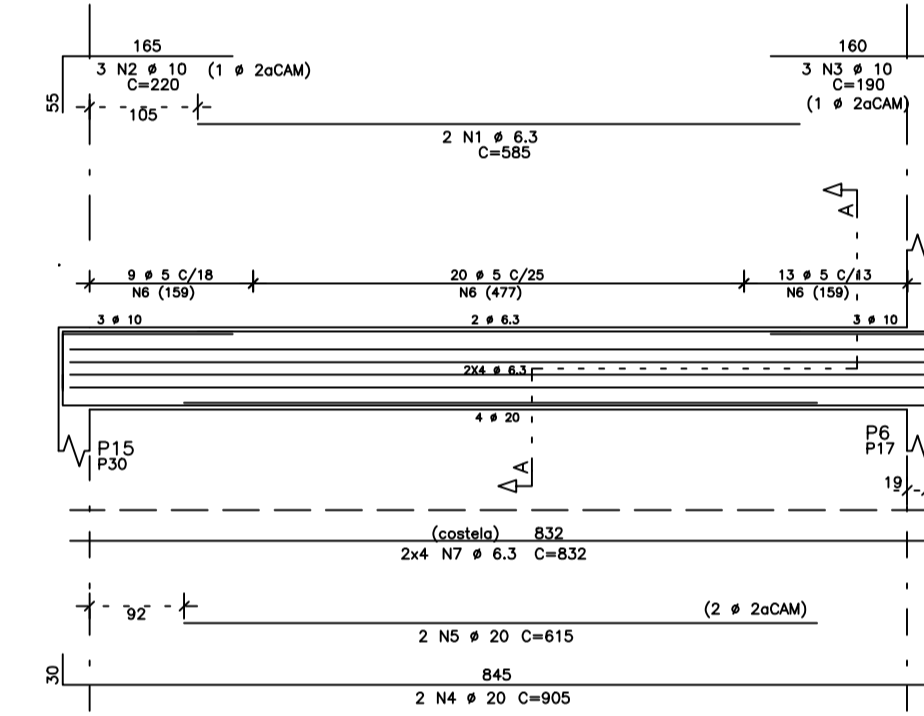
V40 14/60



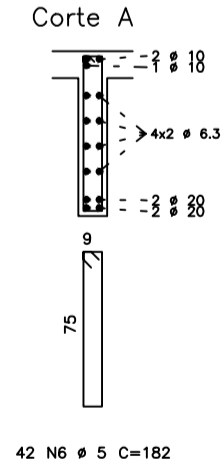
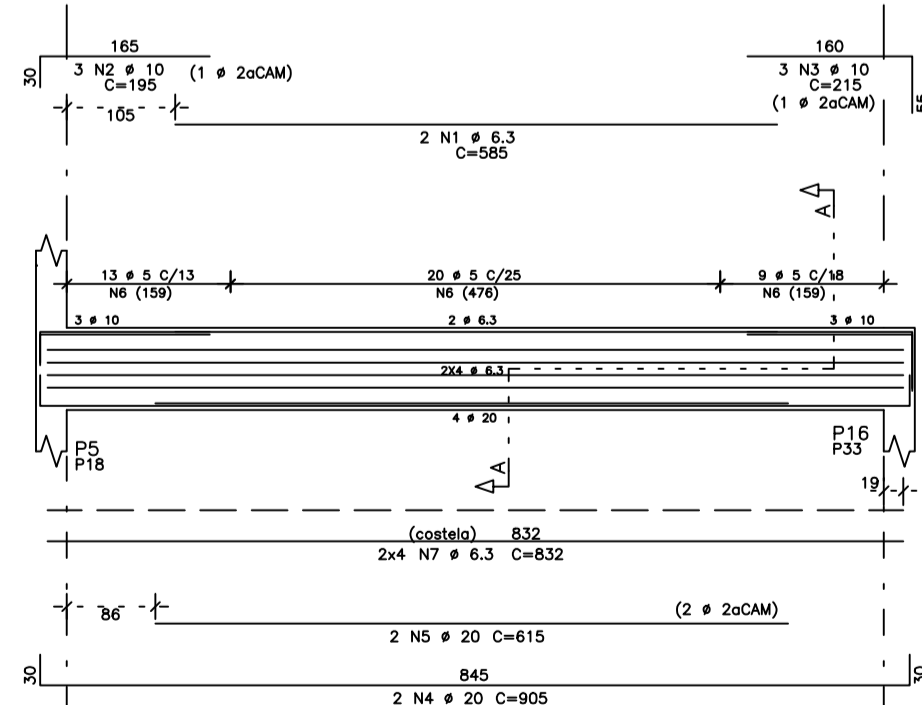
V41 14/60



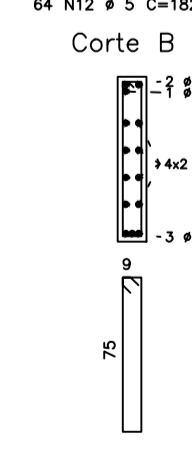
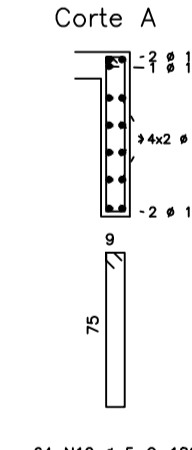
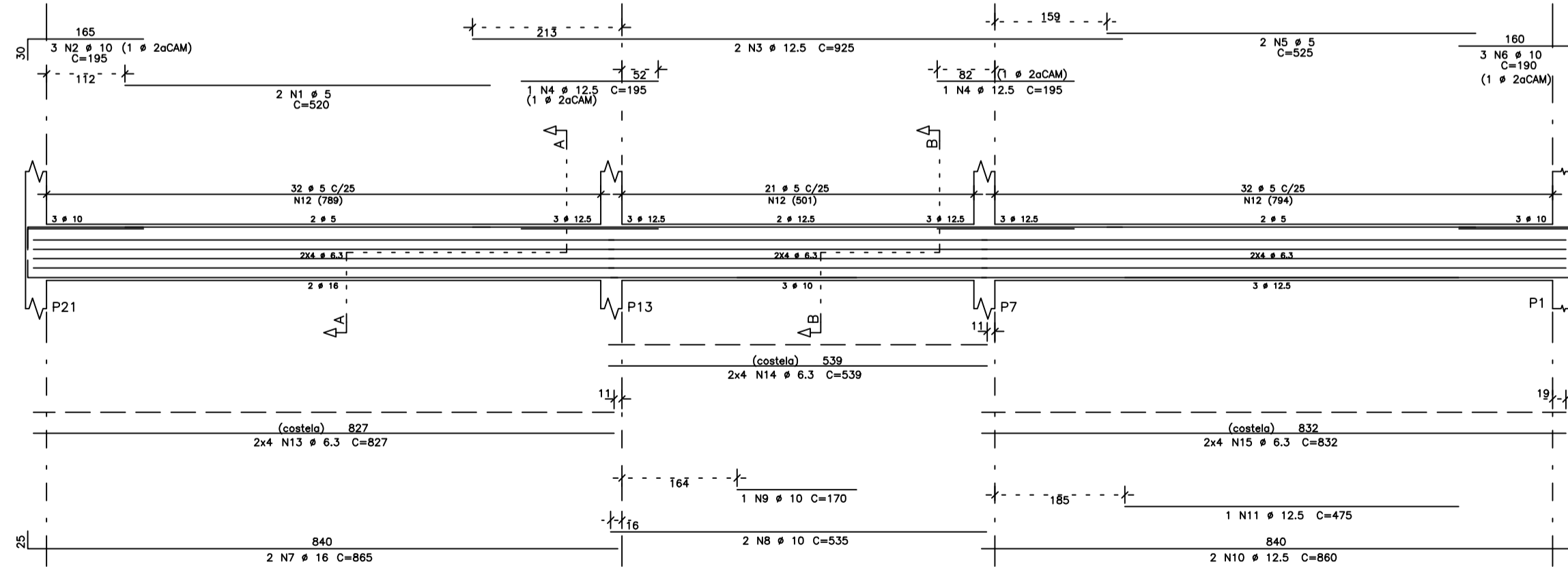
V28=V29 14/80



V59=V6 14/80



V25 14/80



ACO	POS	BIT (mm)	QUANT	COMPRIMENTO (m)	TOTAL (m)
V25					
608	1	5	2	520	1040
50A	2	10	3	180	540
50A	3	12.5	2	925	1850
50A	4	12.5	2	195	390
608	5	5	2	525	1050
50A	6	10	3	190	570
50A	7	16	2	865	1730
50A	8	10	2	535	1070
50A	9	10	1	170	170
50A	10	12.5	2	860	1720
50A	11	12.5	6	475	2850
608	12	5	85	182	15470
50A	13	6.3	8	827	6616
50A	14	6.3	8	538	4312
50A	15	6.3	8	832	6656
V28=V29					
50A	1	6.3	6	385	2310
50A	2	10	6	220	1320
50A	3	10	6	190	1140
50A	4	20	4	905	3620
50A	5	20	4	615	2460
608	6	5	84	182	15288
50A	7	6.3	16	832	13312
V38					
608	1	5	4	340	1360
608	3	5	4	215	860
50A	4	10	4	405	1620
50A	5	10	4	230	920
608	6	5	2	265	530
50A	7	10	4	405	1620
50A	8	10	2	175	350
50A	9	10	1	200	200
50A	10	10	2	175	350
50A	11	10	4	630	2520
50A	12	10	1	255	255
50A	13	10	1	145	145
50A	14	10	2	850	1700
50A	15	10	1	445	445
50A	16	6.3	1	90	90
50A	17	5	100	142	14200
50A	18	6.3	6	645	3870
50A	19	6.3	12	636	7632
50A	20	6.3	6	636	3816
V40					
608	1	5	2	245	490
50A	2	12.5	2	460	920
50A	3	12.5	1	345	345
50A	4	12.5	2	660	1320
50A	5	6.3	2	80	160
608	6	5	24	142	3408
50A	7	6.3	6	614	3684
V41					
608	1	5	3	335	670
50A	2	10	2	180	360
608	3	5	4	215	860
50A	4	10	4	405	1620
50A	5	10	4	230	920
608	6	5	2	265	530
50A	7	10	4	405	1620
50A	8	10	2	175	350
50A	9	10	1	200	200
50A	10	10	2	175	350
50A	11	10	4	630	2520
50A	12	10	2	175	350
50A	13	10	6	630	3780
50A	14	10	2	250	250
50A	15	10	1	285	285
50A	16	10	1	250	250
50A	17	6.3	2	90	180
608	18	5	120	142	17040
50A	19	6.3	12	636	7632
50A	20	6.3	6	640	3840
V59=V6					
50A	1	6.3	4	385	2340
50A	2	10	6	195	1170
50A	3	10	6	215	1290
50A	4	20	4	905	3620
50A	5	20	4	615	2460
608	6	5	84	182	15288
50A	7	6.3	16	832	13312

ACO	RESUMO	ACO	CA	50-60	PESO
	BIT	COMPR	(m)	(kg)	(kg)
608	5	889		142	
50A	6.3	876		219	
50A	10	318		201	
50A	12.5	70		70	
50A	16	17		28	
50A	20	122		304	
Peso Total		608 =		142	
Peso Total		50A =		822	

02	MAR/16	ARTHUR VINICIUS	
01	SET/13	REORG. ORDEM FRANCHAS	
REVISÃO Nº	DATA	NOME	ASSINATURA
AUTORES DO PROJETO E ART		RESPONSÁVEL PELA EXECUÇÃO E ART	
CREA			
PROPRIETÁRIO/PROCURADOR (Instituição Federal de Amador)			
PROJETO DE ESTRUTURA DE CONCRETO Armadura Vigas V25 / V28-V29 / V38 / V40 V41 / V59-V6			
CAMPUS HUMAITÁ		BR 230, KM 05	
Z RURAL		HUMAITÁ	
ESTADO DO PARANÁ		ESTADO DO PARANÁ	
Cidade		Cidade	
Telefone		Telefone	
E-mail		E-mail	
Site		Site	
www.ifam.edu.br			